

Apartment 10 Armitage House, 2
Dowker Street,

PCM
£750 PCM



AVAILABLE FROM AUGUST, UNFURNISHED, NO
SMOKERS, BOND £860, COUNCIL TAX BAND A

PAISLEY
PROPERTIES

MAIN ENTRANCE

The property is entered by a communal entrance with key fob access for residents and intercom release for visitors. The apartment is located on the first floor.

ENTRANCE HALLWAY

You enter the property through a timber door into a welcoming entrance hall which has space to remove outdoor clothing. Herringbone vinyl flooring flows underfoot and doors open to the living dining kitchen, a double bedroom and the bathroom.

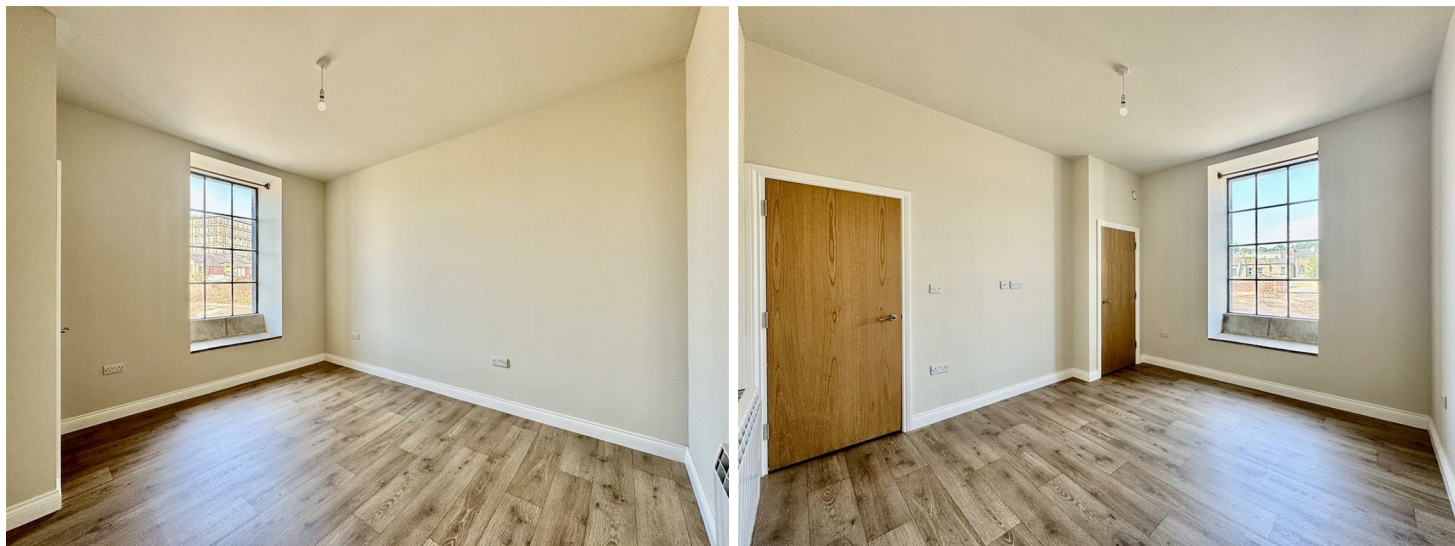
LIVING DINING KITCHEN 22'9" max x 15'5" max



This generous size open plan living dining kitchen is flooded with natural light through the large windows and can easily accommodate a selection of freestanding living and dining furniture. The modern kitchen is fitted with a range of grey contrasting wall and base units, granite work surfaces with matching upstands and an inset stainless steel sink with mixer tap over. Integrated appliances include an electric oven with four ring electric hob and an extractor fan over. There is space for a fridge freezer and plumbing for a washing machine. Herringbone vinyl flooring flows underfoot and spotlights to the ceiling complete the look. A door opens to the hallway.

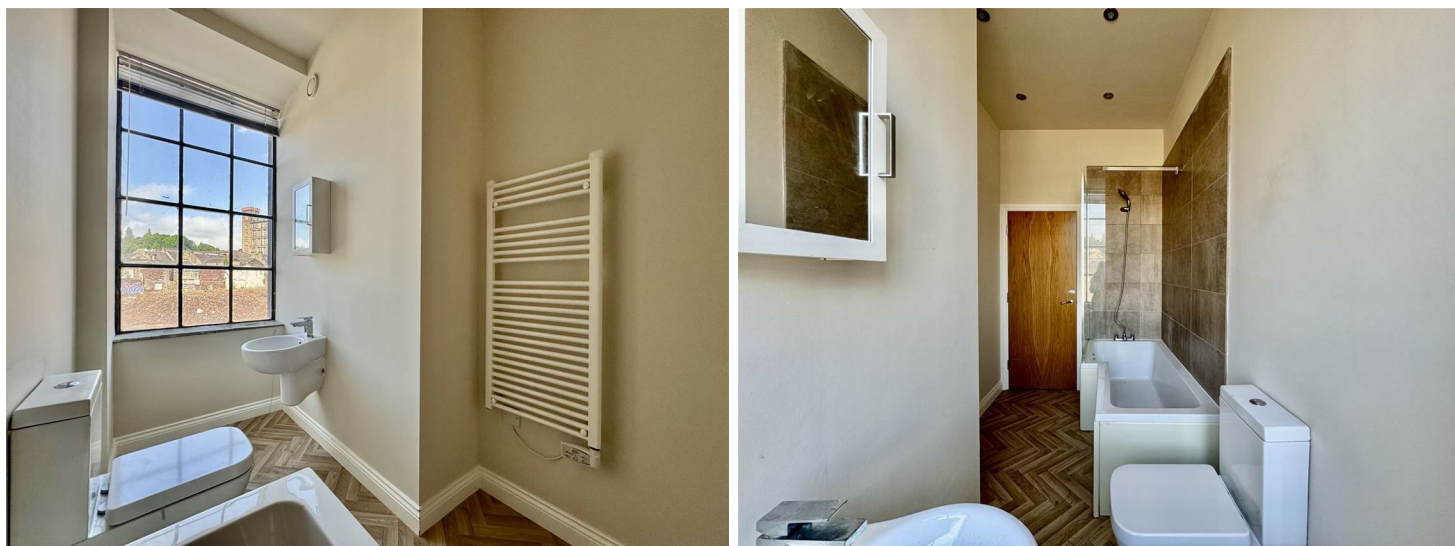


BEDROOM 13'0" max x 10'9" max



A neutrally decorated double bedroom with a large window, ample space for bedroom furniture, a storage cupboard housing the boiler, laminate flooring and a door opens to the hallway.

BATHROOM 10'11" max x 5'10" max



This modern bathroom allows natural light to flow through its large window and comprises of a bath with shower over and glass screen, a wall hung hand wash basin, low level W.C and a towel radiator. The room is partially tiled, herringbone vinyl floors underfoot and there is spotlighting to the ceiling. A door opens to the hallway.

EXTERNAL AND PARKING



Entered by double wrought iron gates, a large car park offers one allocated parking space.

LETTINGS INFORMATION

All measurements are approximate and quoted in metric with imperial equivalents and for general guidance only and whilst every attempt has been made to ensure accuracy, they must not be relied on. We advise you take your own measurements prior to ordering any fixtures, fittings or furnishings. Internal photographs are produced for general information and it must not be inferred that any item shown is included with the property. You are advised to check availability and book a viewing appointment prior to travelling to view.

Some of our properties do accept pets and DSS but you are advised to check this before arranging any viewings. We do not allow smoking in any of our properties.

As of the 1st June 2019 there will be no referencing fees for tenants but we do ask that you are committed to renting the property before applying as fees will be incurred by the landlord and Paisley Properties in order to carry out thorough credit referencing.

As of the 1st May 2026 all tenancies will be Assured Periodic Tenancies. These have fully replaced any Assured Shorthold Tenancies.

We always charge a deposit which is no more than the equivalent of five weeks rent. Please check the individual property for deposit amounts. All our deposits are held in a separate insured account held by the Deposit Protection Scheme (DPS).

PAISLEY PROPERTIES

We are available to do appointments up until 8pm Monday to Friday and up until 4pm Saturday and Sunday so please contact the office if you would like to arrange a viewing. We also offer a competitive sales and letting service, please contact us if you would like to arrange an appointment to discuss marketing your property through Paisley, we would love to help.

MORTGAGES

Mandy Weatherhead at our sister company, Paisley Mortgages, is available to offer clear, honest whole of market mortgage advice. We also run a first time buyer academy to help you prepare in advance for your first mortgage, home-mover and re-mortgage advice. If you would like to speak to Mandy, please contact us on 01484 444188 / 07534 847380 to arrange an appointment.

*Your home may be repossessed if you do not keep up repayments on your mortgage. *

www.paisleyproperties.co.uk

Skelmanthorpe Office:
17 Commercial Road,
Skelmanthorpe, HD8 9DA
t: 01484 443893

Almondbury Office:
75-77 Northgate,
Almondbury, HD5 8RX
t: 01484 443922

Mapplewell Office:
4 Blacker Road,
Mapplewell, S75 6BW
t: 01226 395404

PAISLEY
PROPERTIES

